

Disney MAGIC

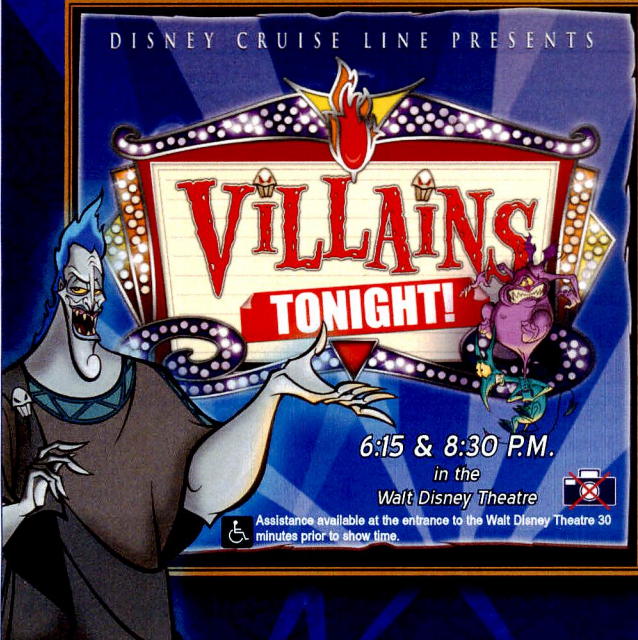
PERSONAL NAVIGATOR

SAINT JOHN: FRIDAY, SEPTEMBER 14, 2012

Sunrise: 7:02 a.m. Sunset: 7:36 p.m. Evening Attire: Cruise Casual

Approx. All Ashore: 8:30 a.m. All Aboard: 4:30 p.m.

DISNEY CRUISE LINE PRESENTS



**VILLAINS
TONIGHT!**

6:15 & 8:30 P.M.
in the
Walt Disney Theatre

Assistance available at the entrance to the Walt Disney Theatre 30 minutes prior to show time.



WELCOME TO SAINT JOHN

WHO WANTS TO BE A MOUSEKETEER?

7:30 and 9:45 p.m., Studio Sea

Your chance to get into the world famous hot seat and win an exclusive prize in our version of the well known T.V. game show.

CLUB 18*21 EVENTS

7:30 and 10:00 p.m., Diversions (Guests 18-21 Only)

Meet other 18 - 21 year olds and share some laughs and plan the rest of your night. A special Game Show - The Wheel at 7:30 p.m. and a social gathering at 10:00 p.m.

SUPERSTAR KARAOKE

10:30 p.m., Studio Sea

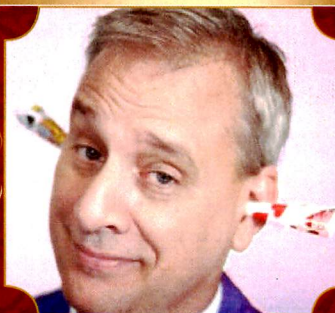
Bring the entire family, grab the mic and sing along to your favorite songs.

DISCO LEGENDS

10:45 p.m., Rockin' Bar D (Guests 18yrs and older)

Put on your platform shoes and hit the dance floor as we catch the disco fever. The party kicks off with a groovy dance number from the Walt Disney Theatre dancers.

TONIGHT IN ROCKIN' BAR D



ADULT CABARET: 10:15 P.M.
THE COMEDY OF
DAVID WILLIAMSON



10:45 P.M.
DISCO LEGENDS
(Both events for Guests 18 & Older)



TIME ZONE CHANGE

Did you remember to turn your clocks FORWARD 1 HOUR last night, or first thing this morning?



PORT AGENT - SAINT JOHN: F.K. Warren; 1216 Sand Cove Road, Suite 134, Box 47; Canada (902)446-8056; Shelley Gerrior: 506-647-8743



**Double Up
Jackpot Bingo**
7:15 p.m., Rockin' Bar D

Special double up session: All electronic cards purchased will be doubled. Four CASH prizes to be won. The Snowball Jackpot is approaching \$2,000 and could be won at any time! First game starts at 7:30 p.m.



Book Now and Save

Book a future cruise today and you'll save 10%, receive up to a \$200 onboard credit and pay a reduced deposit!

Stop by the Future Cruise Sales desk and book by 8:30 p.m. TODAY to be entered into a raffle for a chance to win a \$100 onboard credit for this cruise!

DINNER MENU

Animator's Palate: Show Dinner
Parrot Cay: Island Dinner
Lumières: French Dinner

DRINK OF THE DAY

Pier 21 (Alcoholic)
Mango Smoothie) (Non
Alcoholic)

WEATHER FORECAST

Today: Partly Cloudy
High: 68°F/20°C

IMPORTANT NUMBERS

Fire / Security 7-3001
Medical EMERGENCY 7-3000
Health Center 7-1923

	8:30	8:45	9:00	9:15	9:30	9:45	10:00	10:15	10:30	10:45	11:00	11:15	11:30	11:45	12:00	12:15	12:30	12:45	1:00	1:15	1:30							
SPECIAL	Movie: The Incredibles (PG) Funnel Vision										Movie: Lion King (G) Funnel Vision						Movie: Emperor's New Groove (G) Funnel Vision >2:04 p.m.											
CHARACTER																												
BUENA VISTA THEATRE, Dk. 5																			The Avengers (PG-13)									
FAMILY	Please check your tour tickets for Port Adventures meeting times and locations. Visit the Port Adventures Desk, Deck 3, Midship for any questions.												Toddler Time Promenade Lounge															
FAMILY	Shipboard announcements can be heard tuning into channel 201 on your stateroom television.																		Craft Time: Button Making Promenade Lounge									
FAMILY	Edge Open House Edge																											
ADULTS	Friends of Bill W. Animator's Palate		Books and magazines available at Cove Cafe																									
ADULTS	Stretch & Relax <7:30 a.m. Vista Spa		Boot Camp <8:00 a.m. Vista Spa																									
Vibe, Deck 11															DCL Bag Design				Kinect Adventures									
Edge, Deck 2	Youth Activities Open House Edge				Mosaic Tiles				Craft Corner				Hold the Phone				Just Dance				Around							
Out and About	Youth Activities Open House Edge																						Dodge					
Oceaner Lab, Deck 5	My Family Tree & Movie Time from 8:00am				Apples to Apples				Board Games Galore				GaGa Ball				Light Lunch				Make Your Own Porthole Gaga Eggsperiments							
Oceaner Club, Deck 5	Human Bingo & Craft Time from 8:00am				Go Fetch				UNO!				Villains				Cartoon Corner				Playdough Creations Flitting							
	Craft Galore				Mario Kart				Musical Crafts				Junkanoo Jam				Storytime				Potato Head Fun Crafts							
	Pooh Stretches				Hefahump Hunting				Wacky Relays				Under the Sea Crafts				Slide Fun											
	1:45	2:00	2:15	2:30	2:45	3:00	3:15	3:30	3:45	4:00	4:15	4:30	4:45	5:00	5:15	5:30	5:45	6:00	6:15	6:30	6:45							
SPECIAL	Movie: Lilo and Stitch (PG) Funnel Vision										Disney Channel Jam Fest at Sea Goofy's Pool Stage				Jewish Sabbath Sessions (Guest led)				Movie: Lady and the Tramp (G) Funnel Vision >7:15 p.m.									
CHARACTER	To avoid disappointment, please arrive at the start time of Character appearances.												Daisy Lobby		Minnie Lobby		Pluto Lobby		Donald Lobby		Mickey Lobby		Goofy Lobby					
BUENA VISTA THEATRE, Dk. 5											The Odd Life of Timothy Green (PG) Duration: 1 hour, 40 minutes						Brave (PG) Duration: 1 hour, 41 minutes											
FAMILY	Disney Trivia Promenade Lounge				Disney Channel Jam Fest at Sea Goofy's Pool Stage																							
FAMILY	Board games are available in Promenade Lounge & Diversions								Craft Time: Masquerade Masks Promenade Lounge				Midtown LIVE Promenade Lounge				Villains Tonight! Walt Disney Theatre											
FAMILY	Wide World of Sports Deck is open for your enjoyment Basketball courts, ping pong tables and more.										Toddler Dance Party Promenade Lounge				Disney Trivia Promenade Lounge													
ADULTS							Ladies Pamper Party Vista Spa				Couple's Massage Workshop Vista Spa				Group Cycling Vista Spa													
ADULTS							Informal Bridge and Card Play Diversions				Origami Flowers Diversions				Single's Mingle Cove Cafe				Micah Hulscher LIVE Sessions									
Vibe, Deck 11	Kinect		Craft Time!				Gender Wars 2				Ultimate Scavenger Hunt				Disney Trivia				Bracelet Making									
Edge, Deck 2	Around the World in 7 days				Ultimate Scavenger Hunt				Lava Flow Edge				Celebrity Heads				UNO!				Wii Challenge							
Out and About	Dodgeball Challenge Wide World of Sports Deck				Lava Flow Edge																							
Oceaner Lab, Deck 5	Porthole Charades		Coloring		Transition YA Open House		Ratatouille Cooking School Youth Activities Open House				Animation Cells Youth Activities Open House				Gasses in Action Youth Activities Open House				Marble Mania		Detective							
Oceaner Club, Deck 5	Eggs		To Infinity and Beyond				Chillin' in The Club				Huey, Duey & Louie				Cartoon Corner				Dinner		Beach Crafts		About Me					
	Flittin' Around		Cupcake Mural		Hot and Cold in Captain's Closet				Duck Crafts				Toy Story Mania				Sliding Fun		Scavenger Hunt		King Triton's Court Crafts							
	Colors of the Wind Crafts		Mickey's Match																									
	7:00	7:15	7:30	7:45	8:00	8:15	8:30	8:45	9:00	9:15	9:30	9:45	10:00	10:15	10:30	10:45	11:00	11:15	11:30	11:45	12:00							
SPECIAL	Daisy Lobby		Officer Pin Trading Preludes				Movie: Lady and the Tramp (G) Funnel Vision				NCAA Football: Washington State vs UNLV Funnel Vision (All games subject to satellite reception)																	
CHARACTER	Donald Lobby		Chip & Dale Lobby		Mickey Lobby		Goofy Lobby		Goofy Lobby		Minnie Lobby		Pluto Lobby		Mickey Lobby		Please Note: All characters appearances are subject to change without prior notice.											
BUENA VISTA THEATRE, Dk. 5											Brave (PG) Duration: 1 hour, 41 minutes				The Avengers (PG-13) Duration: 2 hours, 23 minutes													
FAMILY	Bingo Card Pre Sales		Jackpot Bingo Rockin' Bar D		Villains Tonight! Walt Disney Theatre				Midtown LIVE Promenade Lounge				Superstar Karaoke Studio Sea															
FAMILY	Who Wants To Be A Mouseketeer? Studio Sea				Who Wants To Be A Mouseketeer? Studio Sea																							
FAMILY	Family Dance Party Promenade Lounge				Disney Trivia Promenade Lounge				TV Tunes Trivia Promenade Lounge				Smooth Sounds Promenade Lounge															
ADULTS	Club 18*21 Wheel Diversions				N'Joy LIVE Rockin' Bar D				David Williamson Rockin' Bar D				Disco Legends Rockin' Bar D				N'Joy LIVE Rockin' Bar D				DJ Jesse Rockin' Bar D							
ADULTS	Music of John and Joel Sessions				Micah Hulscher LIVE Sessions				Music & Martinis Sessions >10:15pm				Club 18*21 Social Diversions (18-21 yrs)				Piano Requests Sessions				Late Night Piano Sessions							
Vibe, Deck 11	Smoothie Hour				Wii Sports				Karaoke				Pump It Up/Ride the Wave Trivia				Invade Edge 'til 12:15am/Piston Cup 'til 1am/ Chillin' in Vibe 'til 2am											
Edge, Deck 2	Wii		Marshmallow Olympics				Think Fast Wii				Bingo				Boy's and Girl's Chill Wide World of Sports Deck and Edge				Invade the Vibe!				Piston Cup 'til 1am					
Out and About	Soccer Shoot Out The Wide World of Sports Deck				Boy's and Girl's Chill Wide World of Sports Deck and Edge																		Piston Cup til 1am					
Oceaner Lab, Deck 5	Detective School		Gender Wars		Transition		Who Wants to be a Mouseketeer?				Transition		Toy Story Mania on the Big Screen				Box Car Creations		Drive in Movie									
	All About Me		Send A Postcard		Color Me Heroic				Bingo				Mineral Mosaics															
Oceaner Club, Deck 5	King Triton's Royal Court		Mickey Says and other Fun!				Dress Up Fun				Royal Ball				Slide Fun				Games Galore				Camp Out		Free Time			
	Under the Sea Crafts		Aladdin's Adventure				Games				Princess Crafts				Story Time in Captain's Closet				Cartoon Corner									

DINE & PLAY

A convenience for families dining at 8:15 p.m., our Youth Activities Counselors will be available at 9:15 p.m. at the entrance of Lumière's, Parrot Cay and Animator's Palate dining rooms to bring registered children to join the fun in the Oceaneer Club and Oceaneer Lab.



FLOUNDER'S REEF NURSERY

Deck 5 Midship (7-5864) Open 8:30am -11:00pm



OCEANEER CLUB 3 - 12 YEAR OLDS

Deck 5 Midship (7-1440) Open 9:00am -12:00am

HEFFALUMP HUNTING - 9:30 AM

Come look for Heffalumps on this fun hunt around the Club.

ALADDIN'S ADVENTURES - 7:45 PM

Come join us as we go on a fun-filled Arabian adventure, discover a flying carpet and find the hidden Genie.

CAMP OUT - 10:45 PM

Enjoy a camp fire night out under the stars with games.



OCEANEER LAB 3 - 12 YEAR OLDS

Deck 5 Midship (7-1445) Open 8:00am -12:00am

GO FETCH - 9:45 AM

Fetch every item on the list, are you up for the challenge?

EGGSPERIMENTS - 1:15 PM

Learn how to conduct all kinds of experiments with eggs including how to get an egg in and out of a bottle and how to make an egg float in water.

DETECTIVE SCHOOL - 6:45 PM

Train to be a junior detective and solve a mystery.

WHO WANTS TO BE A MOUSEKETEER? - 8:30 PM

Join us as we travel to Studio Sea for your chance to get into the hot seat and win limited edition prizes!

YOUTH ACTIVITIES OPEN HOUSE

Open House is an opportunity for all to come and participate in a variety of exciting activities and free time in the Oceaneer Club, Lab and Edge throughout the cruise. During these times secured programming will still be offered in the other venue for those looking to check their children into care.



YA OPEN HOUSE OCEANEER LAB

Deck 5 Midship (7-1445) Open 3:00pm - 6:00pm

RATATOUILLE COOKING SCHOOL- 3:15 PM

As a family, join our Ratatouille Cooking School for baking fun! Make new friends and bake your own Chocolate Chip Cookies!

ACTIVITIES FOR 11-14 YEAR OLDS

Deck 2, Midship (7-5816) Open 9:00am - 12:00am

LAVA FLOW

3:45 p.m. - Edge

Build your own volcano and watch it erupt as you learn about the physics of volcanos!

ACTIVITIES FOR 14-17 YEAR OLDS

Deck 11 Midship (7-18517) Open 12:00pm - 2:00am

PUMP IT UP

10:00 p.m.

Use the state-of-the-art fitness equipment from Vista Spa while listening to your favorite music.



FUN FOR THE WHOLE FAMILY

FAMILY CRAFTS

12:30 p.m. and 3:15 p.m., Promenade Lounge

Time to get crafty and put your creative skills to use. Create a fun souvenir that's yours to keep. Button Making at 12:30 p.m. and Masquerade Masks at 3:15 p.m.

DISNEY TRIVIA

2:15, 6:30, and 8:30 p.m., Promenade Lounge

Navigate your way through another round of questions to test your Disney knowledge.

DISNEY CHANNEL JAM FEST AT SEA

4:30 p.m., Goofy's Pool Stage

Get ready for a jammin', slammin', splish splashin' good time at the new Disney Channel Jam Fest at Sea! Imagine all of your favorite Disney Channel music stars coming together for an afternoon of contests, great music, and hot video's.

DOUBLE UP JACKPOT BINGO

7:15 p.m., Rockin' Bar D

Special double up session: All electronic cards purchased will be doubled. Four CASH prizes to be won. The Snowball Jackpot is approaching \$2,000 and could be won at any time! First game starts at 7:30 p.m.

WHO WANTS TO BE A MOUSEKETEER?

7:30 and 9:45 p.m., Studio Sea

Your chance to get into the world famous hot seat and win an exclusive prize in our version of the well known T.V. game show.

SUPERSTAR KARAOKE

10:30 p.m., Studio Sea

Bring the entire family, grab the mic and sing along to your favorite songs.



CHARACTER APPEARANCES

Come and see some of our Disney Friends in the Atrium Lobby starting at 4:30 p.m.

For a complete listing of today's character appearances, please dial 7-PALS or refer to the information board in the Lobby Atrium.

ADULT EXCLUSIVE ENTERTAINMENT

(Guests 18 years and older)

SINGLES' MINGLE

5:00 p.m., Cove Cafe

Single, single parent or just traveling alone? Join your Cruise Staff for an informal gathering.

PIANO AND VOCAL FAVORITES

7:30, 9:30, 10:30 and 11:30 p.m., Sessions

Pianist Gayla Smith plays your favorite piano tunes in Sessions including special sets entitled "Music of John and Joel" at 7:30 p.m.

CLUB 18*21 EVENTS

7:30 and 10:00 p.m., Diversions (Guests 18-21yrs only)

Meet other 18-21 year olds, share some laughs and plan the rest of your night. A special Game Show - The Wheel at 7:30 p.m. and a social gathering at 10:00 p.m.

CABARET: DAVID WILLIAMSON

10:15 p.m., Rockin' Bar D

Enjoy the Comedy of David Williamson as he entertains in this adult-exclusive, cabaret-style show.

DISCO LEGENDS

10:45 p.m., Rockin' Bar D

Put on your platform shoes and hit the dance floor as we catch the disco fever. The party kicks off with a groovy dance number from the Walt Disney Theatre dancers.

NCAA FOOTBALL

10:00 p.m. - Funnel Vision, Deck 9, Midship
Diversions, Deck 3, Forward
Washington State vs. UNLV

(All games subject to satellite reception)

After 9:00 p.m., Diversions is an adult-exclusive

MORE TO ENJOY WHILE ONBOARD

VISTA GALLERY

Take home a piece of art from Disney's Featured Artists. Visit the Vista Gallery, Deck 4 Midship, to view stunning Disney pieces available for retail.

GET THE PICTURE!

Remember your Disney Cruise forever when you take home all your professional photos on disc. Visit the interactive photo kiosks in Shutters & find out how you can "Get the Picture!"

SURF @ SEA

\$0.75 per minute or save money by buying blocks of time. \$55 for 100 minutes, \$100 for 250 minutes and \$150 for 500 minutes. Wireless information sheets are available at Guest Services, Deck 3, Midship.

SHOPPING IN SAINT JOHN

Visit Alyssa at her desk, Deck 3 Midship from 10:00 - 10:30 a.m. for last-minute shopping tips, coupons and VIP cards for Saint John shopping. Don't forget your shopping maps!



DISNEY VACATION CLUB® GROUP PREVIEW

Want to learn more about taking magical vacations year after year? Please see a Disney Vacation Club representative on Deck 4, Mid-Ship, or call 7-2805 from your stateroom phone for more information about our interactive group preview.

TOP TO TOE

Be pampered from head to toe with a relaxing Hot Stone Back, Neck and Shoulder Massage, European Facial, Foot and Ankle Massage, and Full Body Exfoliation. Only \$139 for 75 minutes, plus free glass of champagne!



OPERATING HOURS

Disney Vacation Club Desk	5:00 p.m. - 10:00 p.m.	Port Shopping Info	7:30 p.m. - 8:30 p.m.
Future Cruise Sales Desk	9:00 a.m. - 10:00 a.m.	Port Adventures Desk	8:00 a.m. - 11:00 a.m.
	4:00 p.m. - 6:00 p.m.		7:00 p.m. - 8:30 p.m.
	7:30 p.m. - 8:30 p.m.	Preludes (snacks)	5:45 p.m. - 6:30 p.m.
Goofy's Pool	6:00 a.m. - 12:00 mid		8:00 p.m. - 8:45 p.m.
Guest Services Desk	24 Hours	Quarter Masters Arcade	24 Hours
Health Center	9:30 a.m. - 11:00 a.m.	Quiet Cove Pool	6:00 a.m. - 12:00 mid
	4:30 p.m. - 7:00 p.m.	Shutters Photo Gallery	5:00 p.m. - 11:00 p.m.
Mickey's Mates	5:30 p.m. - 11:00 p.m.	Treasure Ketch	5:30 p.m. - 11:00 p.m.
Mickey's Pool	8:00 a.m. - 10:00 p.m.	Up Beat Duty Free	5:30 p.m. - 11:00 p.m.
Mickey's Slide	11:00 a.m. - 5:30 p.m.	Vista Spa and Salon	8:00 a.m. - 10:00 p.m.
Mickey's Splash Pool	8:00 a.m. - 8:00 p.m.	Vista Spa Fitness Center	6:30 a.m. - 10:00 p.m.



Today we visit Saint John, New Brunswick, Canada's oldest incorporated city. Remember, it is not too late to book an amazing adventure to the Bay of Fundy or a Coastal Kayak and Lobster cookout! Don't forget we will arrive to Halifax tomorrow so plan ahead to ensure your first choice is available. Come visit us on Deck 3, Midship where our team is waiting to answer any questions you might have!

SHOPPING



Everyday there's something new at Mickey's Mates. Be sure to visit our shops often for daily onboard promotions. Deck 4, Forward.



Disposable cameras, sundries and sunscreen are available in Treasure Ketch, Deck 4, Forward.

Dining Hours

Consuming raw or undercooked meats, seafood, shellfish, eggs, milk, or poultry may increase your risk for foodborne illness, especially if you have certain medical conditions.

BREAKFAST

Cove Cafe	6:30 a.m.
Goofy's Galley	6:30 a.m. - 9:00 a.m.
Lumière's À-La-Carte	8:00 a.m. - 9:30 a.m.
Topsider Buffet	7:15 a.m. - 10:30 a.m.
Parrot Cay	7:30 a.m. - 10:45 a.m.

LUNCH

Goofy's Galley	11:00 a.m. - 6:30 p.m.
Lumière's À-La-Carte	12:00 p.m. - 1:30 p.m.
Pinocchio's Pizzeria	11:00 a.m. - 6:00 p.m.
Pluto's Dog House	11:00 a.m. - 6:00 p.m.
Topsider Buffet	11:45 a.m. - 2:00 p.m.

DINNER

Animator's Palate*	5:45 p.m. & 8:15 p.m.
Lumière's*	5:45 p.m. & 8:15 p.m.
Palo (Reservations Required)	6:00 p.m. - 8:30 p.m.
Parrot Cay*	5:45 p.m. & 8:15 p.m.
Pluto's Dog House	6:00 p.m. - 10:00 p.m.
Topsider À-La-Carte Dinner	6:30 p.m. - 8:30 p.m.

* Pre-arranged seating assignments

Bar Hours

Bars are solely for adults 18 and older, except during scheduled family events. Adults must be 21 and older to consume alcoholic beverages.

ON DECK

Cove Cafe	6:30 a.m. - 12:00 mid
Pinocchio's Pizzeria	9:00 a.m. - 12:00 mid
Signals	12:30 p.m. - 9:30 p.m.

LOUNGES

Preludes	Open during show times
Promenade Lounge	7:30 a.m. - 12:00 mid
Studio Sea	Open during events only

BEAT STREET (18 and older after 9:00 p.m.)

Diversions	5:30 p.m. - 12:30 a.m.
Diversions 2 for 1 specials	7:30 p.m. - 8:15 p.m.
Rockin' Bar D	7:00 p.m. - 2:00 a.m.
Sessions (guests 18 and older)	5:30 p.m. - 12:30 a.m.

LATE NIGHT SNACKS

Diversions	11:00 p.m. - 12:00 mid
Ice Cream at Goofy's Galley	6:00 p.m. - 11:00 p.m.
Pinocchio's Pizzeria	9:30 p.m. - 12:00 mid
Promenade Lounge	11:00 p.m. - 12:00 mid

ADDED FEATURES

Beverage Station	24 hours
Room Service	24 hours

Chamilia Collection

Founded in 2002 on the premise of putting jewelry design into the hands of the customer. Visit Treasure Ketch to personalize your own Chamilia Jewelry.

Designer Fragrances

All the top designer fragrance lines available to you at Duty Free pricing. Choose from Chanel, Marc Jacobs, Bulgari, Calvin Klein and more.

Sophia Fiori

Dazzling Diamonds, Tantalizing Tanzanite And many other Jewels. From affordable to high end connoisseur Diamonds.

Officer Pin Trading

Trade pins with the officers of the Disney Magic tonight from 7:30 p.m. - 8:15 p.m. in Preludes, Deck 4 Forward.

IMPORTANT INFORMATION

Security Notice

All Guests (including Children) who wish to disembark or embark the ship are required to present their Key to the World card at the gangway. A photo ID is also required for those Guests who are 18 years of age or older. Guests under the age of 18 are required to have a Parent, Guardian or other responsible adult sign an authorization form at the time it is given out if they wish to go ashore unaccompanied. Authorization forms are available at the gangways and Guest Services.

Cold and Flu Reminder

Please wash hands frequently and thoroughly, particularly before meals. Contact the Health Center by dialing 7-1923, should anyone in your party become ill.

Inclement Weather

For the safety of all Guests, outdoor events may be changed due to unforeseen weather conditions.

Sunscreen Advisory

Don't forget to apply sunscreen and insect repellent when going ashore.

Environmental Message

With Disney's commitment to the Environment please refrain from throwing anything over the Ship's side. Thank you.

No Reserved Seats Policy

As a courtesy to all Guests we kindly advise that the saving of seats is not permitted in the Walt Disney Theatre, and the saving of the sun loungers is not permitted on Deck 9 and 10. Items left unattended will be returned to lost and found at Guest Services Deck 3 Midship.

Smoking

For the comfort of our Guests the following open deck areas on the Starboard Side are designated as Smoking areas: Deck 4 Starboard side from 6:00pm to 6:00am ONLY, Deck 9 Forward Starboard side at Quiet Cove and Deck 10 Starboard side. Smoking is prohibited in all Guest staterooms. Guests found smoking in their staterooms will be charged a \$250 stateroom recovery fee.

Corridor Quiet Hours

As a courtesy to all our Guests, please recognize quiet hallway hours from 10:00 p.m. til 8:00 a.m.

Walt Disney Theatre

Theatrical performances may use artificial fog, strobe lights, pyrotechnics and other special effects. For the safety of our performers and the comfort of those around you, the use of any photography or video recording device or any electronic equipment is prohibited.

Verandah Safety

Please do not leave any combustible materials on your balcony when not present in your stateroom for safety reasons.